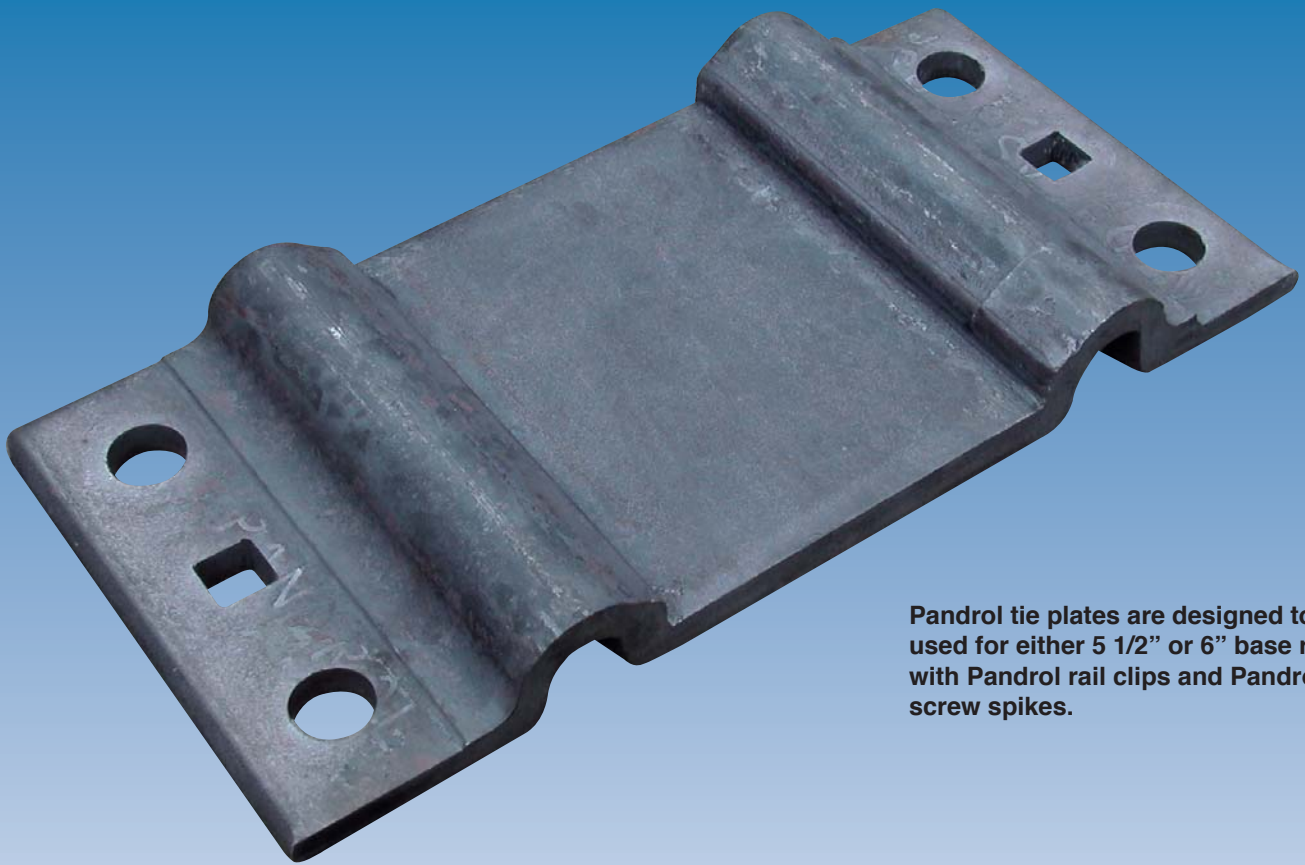


TIE PLATE



Pandrol tie plates are designed to be used for either 5 1/2" or 6" base rail with Pandrol rail clips and Pandrol screw spikes.

SPECIFICATIONS:

- Rolled to AREMA material specifications.
- Palletizing available at 100 plates per pallet

DIMENSION A	WEIGHT OF PLATE* "AS PUNCHED"
7 3/4"	25.2

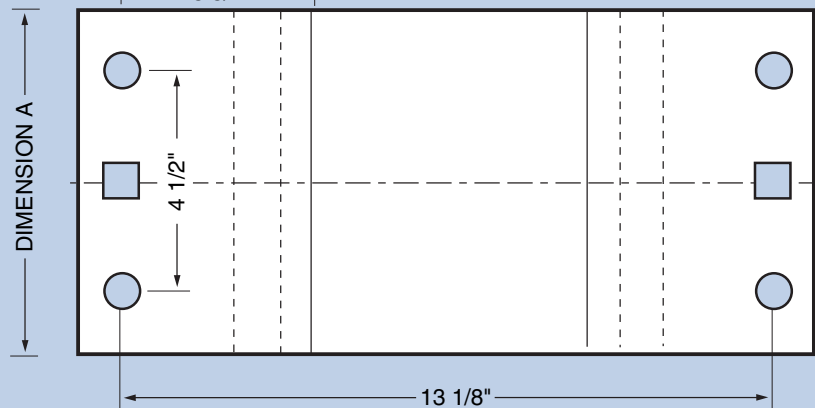
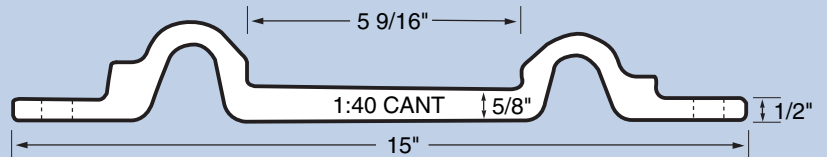
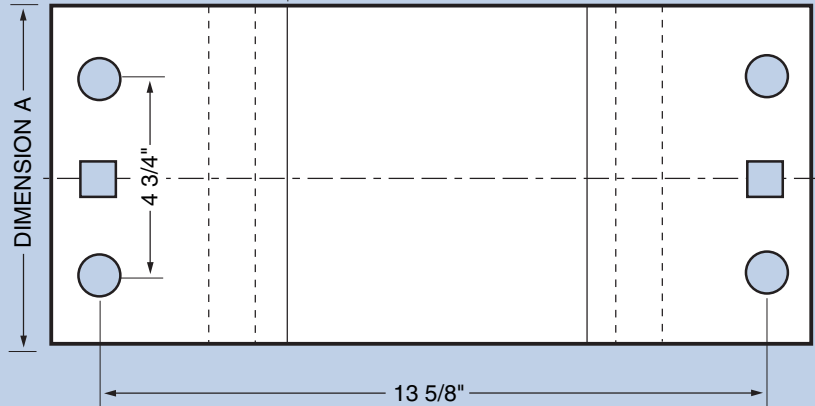
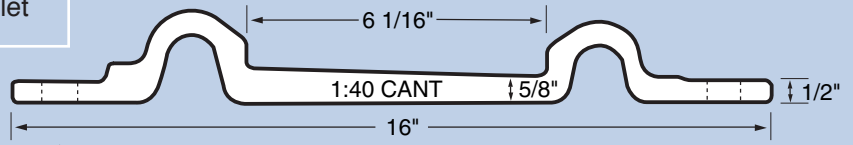
*Weights given are approximate.

NOTE: Standard punching shown. Square holes are 11/16". Round hole punching available up to 1 5/32" maximum.

Tie plates are also available for 100 lb. ARA-B rail. Call Pandrol for additional information.

DIMENSION A	WEIGHT OF PLATE* "AS PUNCHED"
7 3/4"	23.4

*Weights given are approximate.



CONVENTIONAL PUNCHING

6" Rail Base		5 1/2" Rail Base	
Part Number		Part Number	
TPL-P1,6	7 3/4" x 16" w/6, 11/16" square holes	TPL-P26, 5.5	7 3/4" x 15" w/6, 11/16" square holes
TPL-P2,6	7 3/4" x 16" w/4, 1" round holes and 2, 11/16" square holes	TPL-P26M, 5.5	7 3/4" x 15" w/4, 1" round holes and 2, 11/16" square holes

Other sizes and hole punching available.



Pandrol USA, LP
501 Sharptown Road
P.O. Box 367
Bridgeport, NJ 08014
(856) 467-3227
(800) 221-CLIP
FAX (856) 467-2994
www.pandrolusa.com

In the interests of product improvement, Pandrol USA, LP reserves the right to change the specifications contained herein at any time without prior notice.