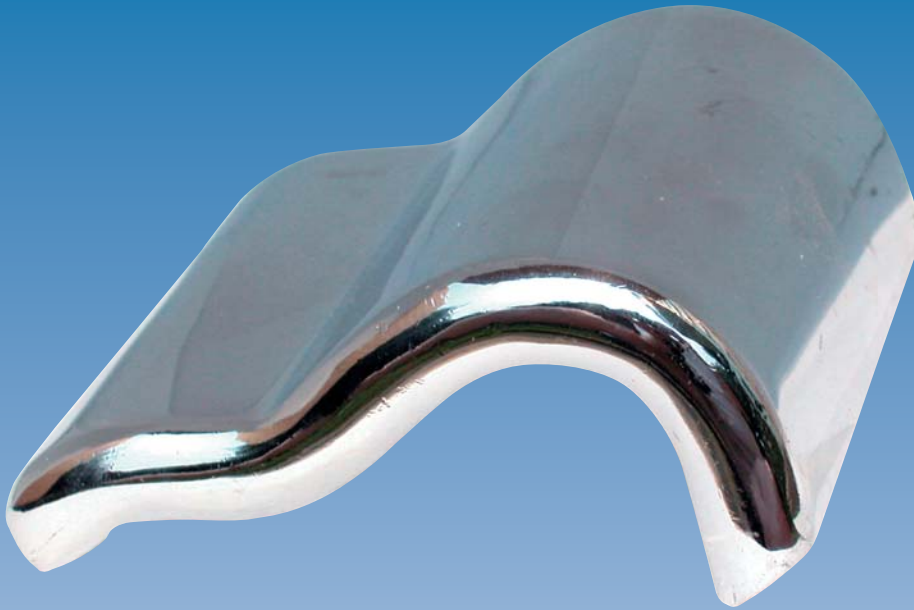


WELD-ON SHOULDERS



Pandrol Weld-On Shoulders are designed to be used in special trackwork locations that do not permit the use of the standard Pandrol tie plate. Switches, scales, steel structures and maintenance facilities are just some of the applications of this steel shoulder. Generally used on a flat steel plate, these shoulders are beveled to facilitate welding. Weld-On Shoulders are designed to provide optimum lateral resistance and maximum clip toe load.

Weld-On Shoulders can be designed for all rail sizes and are readily available in the commonly used standard rail sizes.

PRESSED STEEL WELD-ON SHOULDER SPECIFICATIONS:

- Made from low carbon steel
- Approximate shipping weight: 1.5 lbs.
- Normally packed 50 per bag

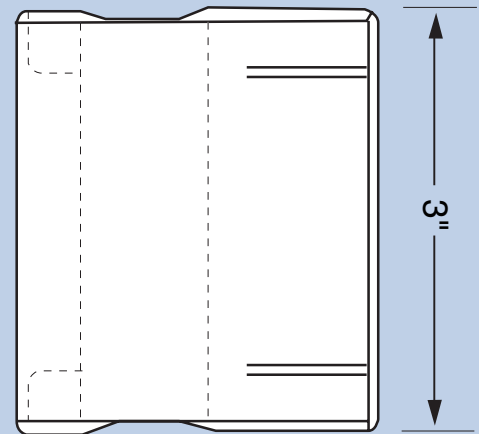
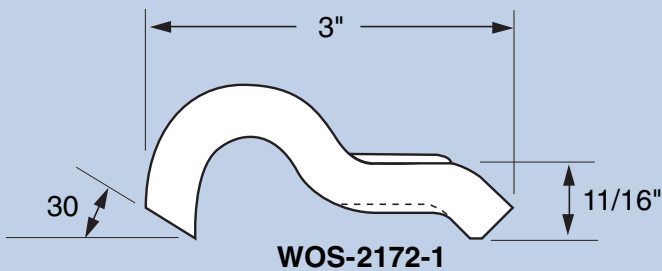
FORGED STEEL WELD-ON SHOULDER SPECIFICATIONS:

- Made from low carbon steel
- Approximate shipping weight: 1.7 lbs.
- Normally packed 50 per bag

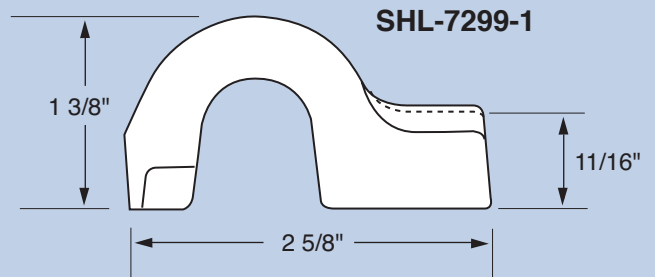
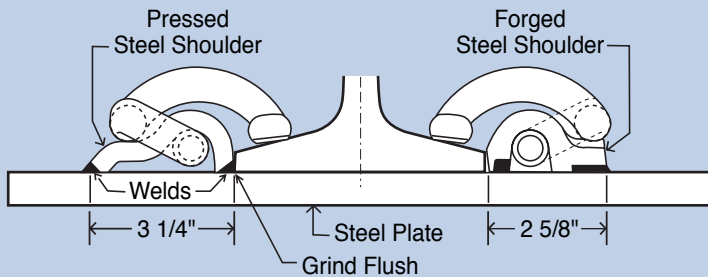
PART NO.	RAIL SIZE
WOS-2172-1	115 -140 RE
WOS-2172-2	100 RB
WOS-2172-5	115 -140 RE, 1/4" Pocket
WOS-2172-6	100 RB, 1/4" Pocket
WOS-7824	Insulated Assemblies - 10mm pad

PART NO.	RAIL SIZE
SHL-7299-1	115 - 140 RE

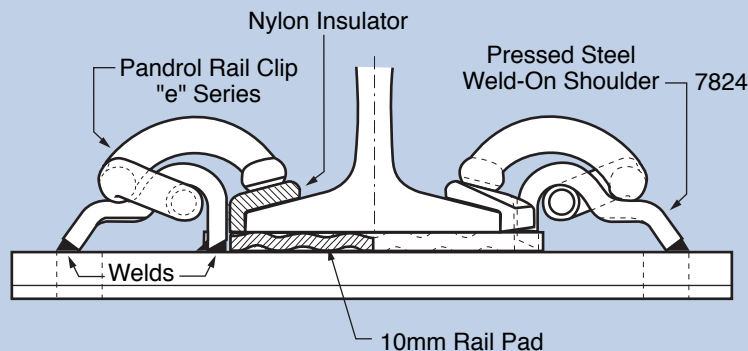
* Designs available for virtually all rail sizes



WELD-ON SHOULDER STANDARD ASSEMBLY



WELD-ON SHOULDER INSULATED ASSEMBLY



Pandrol USA, LP
 501 Sharptown Road
 P.O. Box 367
 Bridgeport, NJ 08014
 (856) 467-3227
 (800) 221-CLIP
 FAX (856) 467-2994
www.pandrolusa.com

Pandrol's weld-on shoulder is protected by U.S. and foreign patents.

In the interests of product improvement, Pandrol USA, LP reserves the right to change the specifications contained herein at any time without prior notice.