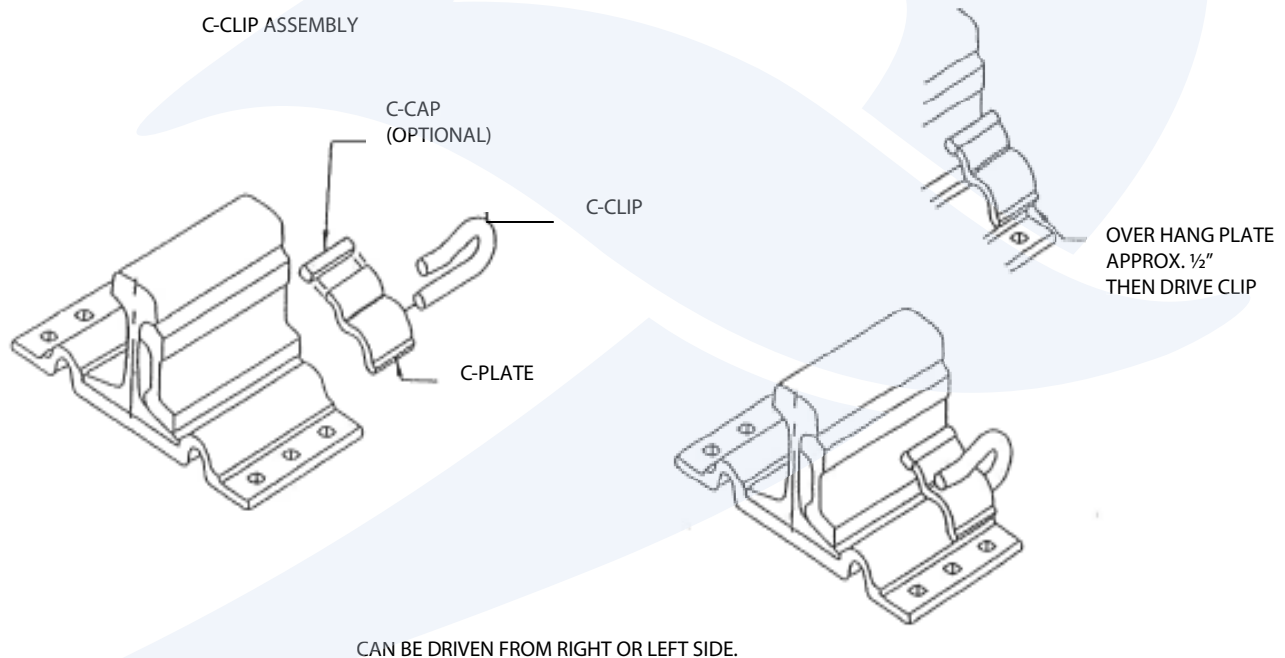


C CLIP JOINT ASSEMBLIES INSTALLATION INSTRUCTIONS

The Pandrol brand "C" clip joint fastening assembly consists primarily of two parts; the C clip and the C plate. The C plate has been designed for specific applications. There is a different C plate for rolled steel tie plates, concrete ties, and weld on shoulders as well as the different rail sizes. Each C plate is stamped on the lower portion of the plate with a different letter, A - L, corresponding to a particular application. (See application chart.)

Installation

The first step in this installation is to place the C plate on the clip housing with the longer portion of the plate resting on the joint bar. The C clip can be driven from the right or left hand positions. It will normally be driven from the right unless there is bolt interference or other clearance problems. The C clip will usually start easier if the C plate is overhanging the clip housing by approximately 1/2" to the driving side. The clip is fully installed when the contact point is in the center of the plate. The clip should ride in the upper ridge, but can use the lower one if circumstances dictate.



General

- The C plate can use a nylon cap for providing insulation when required.
- If difficulty in installation occurs, consult with Pandrol USA to insure the proper plate is being used.
- Concrete tie applications will also require a side post insulator to maintain proper rail position in the rail seat.
- C Clips are sold as an assembly comprised of 2 C clips and 2 C plates. This is enough for one rail seat.

Associated part number:

CPA-7033 – A, B, C, D, E, G
Add the letter "I" for insulation



THIS DRAWING IS A PART OF THE TECHNICAL INFORMATION AT THE END OF THIS DRAWING. IT IS NOT TO BE USED IN ISOLATION. THE USER OF THIS DRAWING IS RESPONSIBLE FOR THE PROPER APPLICATION OF THE INFORMATION CONTAINED HEREIN. THE USER OF THIS DRAWING IS RESPONSIBLE FOR THE PROPER APPLICATION OF THE INFORMATION CONTAINED HEREIN.

TECHNICAL INFORMATION AT THE END OF THIS DRAWING

GENERAL NOTES:
 1. SEE DRAWING FOR DIMENSIONS AND TOLERANCES.
 2. SEE DRAWING FOR MATERIAL SPECIFICATIONS.
 3. SEE DRAWING FOR FINISHES.
 4. SEE DRAWING FOR CONNECTIONS.
 5. SEE DRAWING FOR DETAILS.

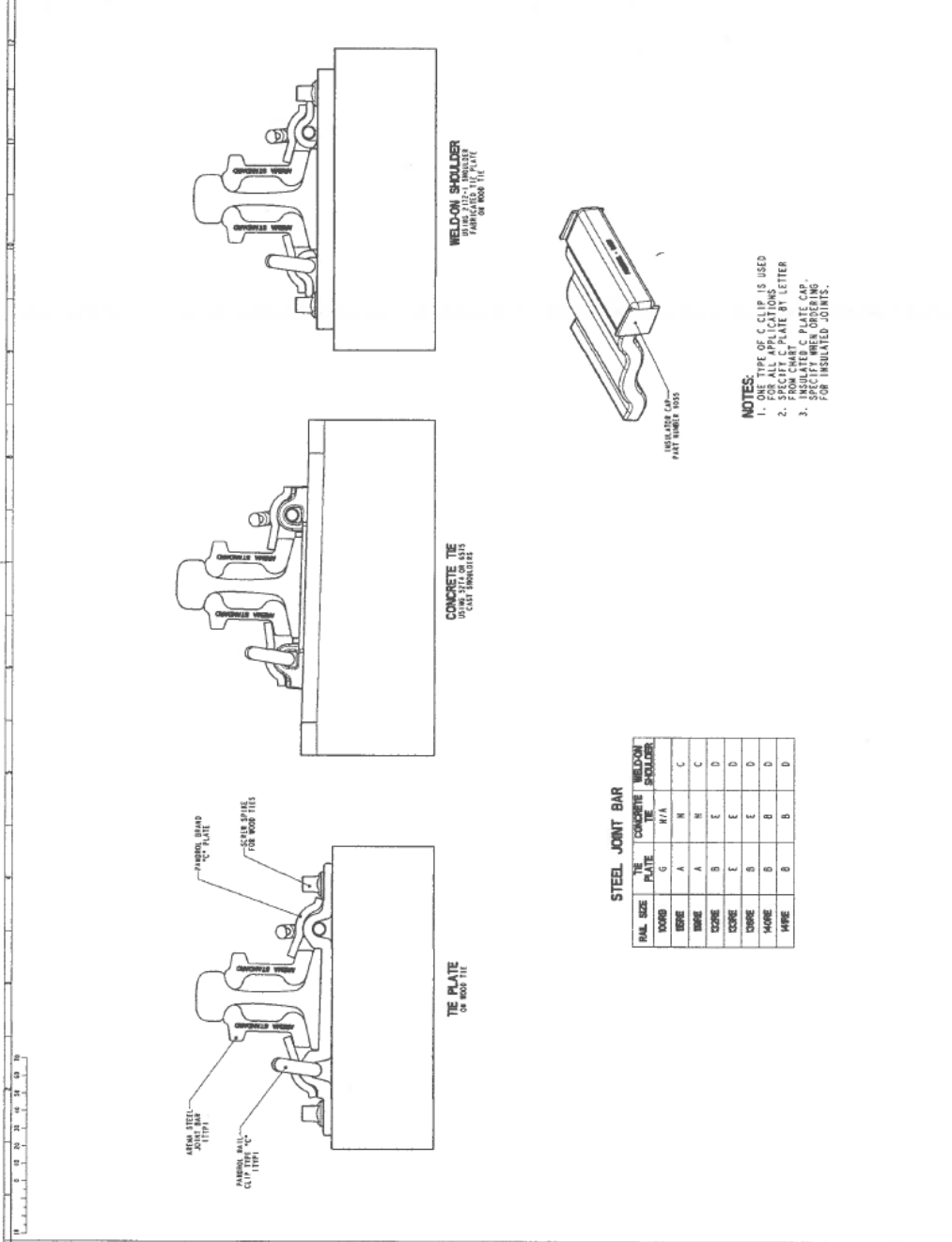
ISSUE STATUS
 THIS DRAWING IS THE RESULT OF A REVISION TO THE ORIGINAL DESIGN. THE REVISIONS ARE INDICATED BY THE DATE AND THE NUMBER OF THE REVISION. THE ORIGINAL DESIGN IS INDICATED BY THE DATE AND THE NUMBER OF THE ORIGINAL DESIGN.

DESIGNER: [Name]
CHECKED: [Name]
DATE: [Date]

PROJECT: [Project Name]
OFFICE: [Office Name]
SCALE: [Scale]

PANDROL
 INSULATED JOINT SYSTEMS
 1000 WEST 10TH AVENUE
 DENVER, COLORADO 80202

C PLATE SELECTION FOR JOINT BAR APPLICATIONS
 DRAWING NO. 7033
 SHEET NO. 1 OF 1



- NOTES:**
1. ONE TYPE OF C-CLIP IS USED FOR ALL APPLICATIONS.
 2. SPECIFY C-PLATE BY LETTER.
 3. INSULATED C-PLATE CAP. SPECIFY WHEN ORDERING FOR INSULATED JOINTS.

STEEL JOINT BAR

BAR SIZE	CONCRETE TIE	WELDON SHOULDER
10000	G	H/A
8000	A	N
6000	A	N
4000	B	E
2000	C	E
1000	B	E
500	B	B
250	B	B