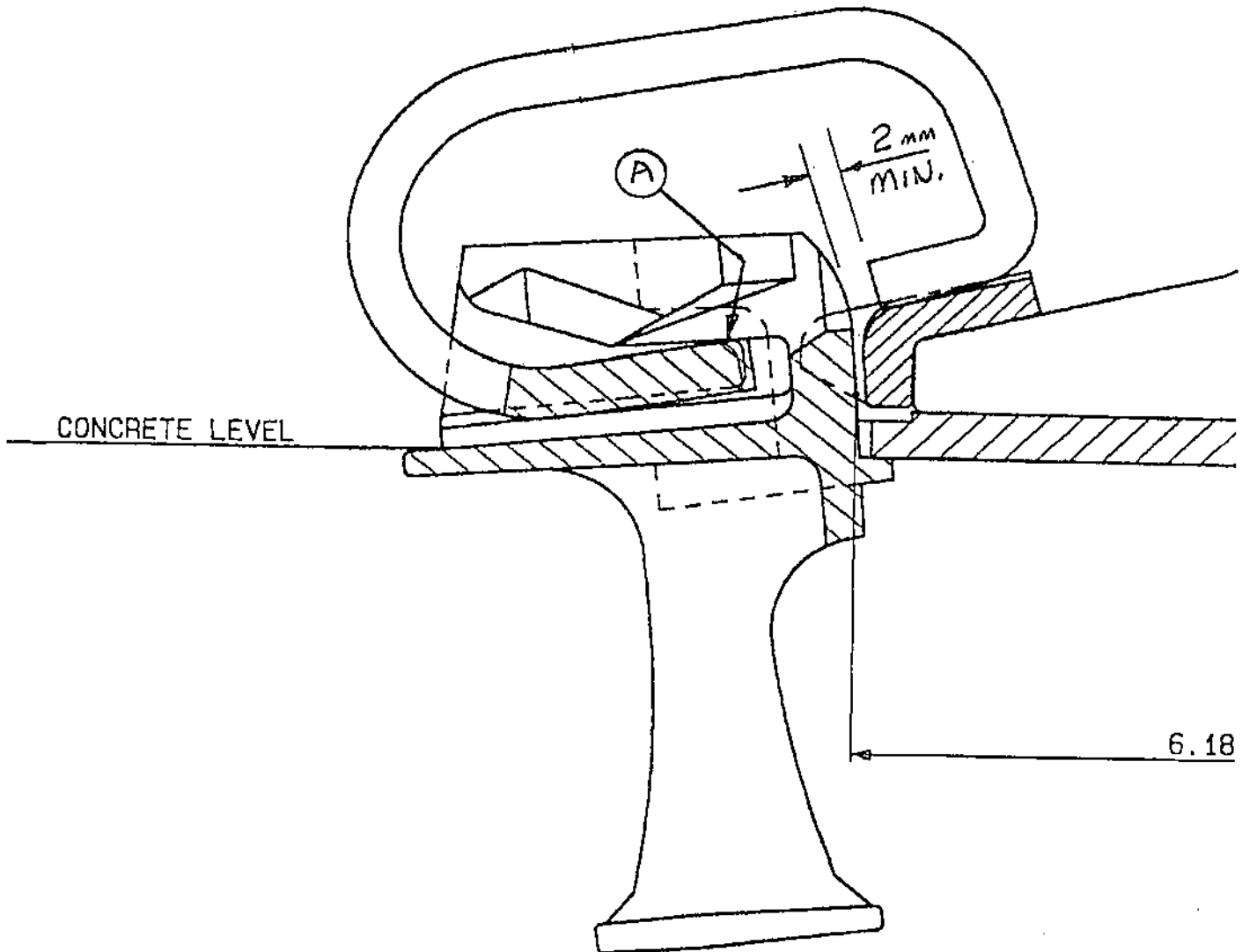


SAFELOK SPRING CLIPS -- INSTALLATION INSTRUCTIONS

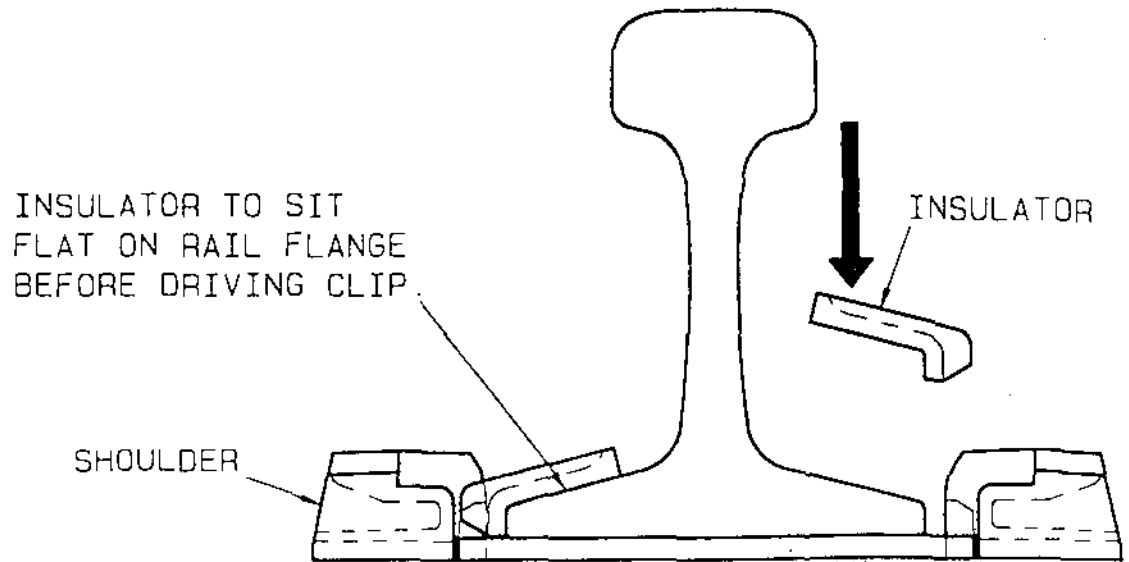
Installation Dimensions



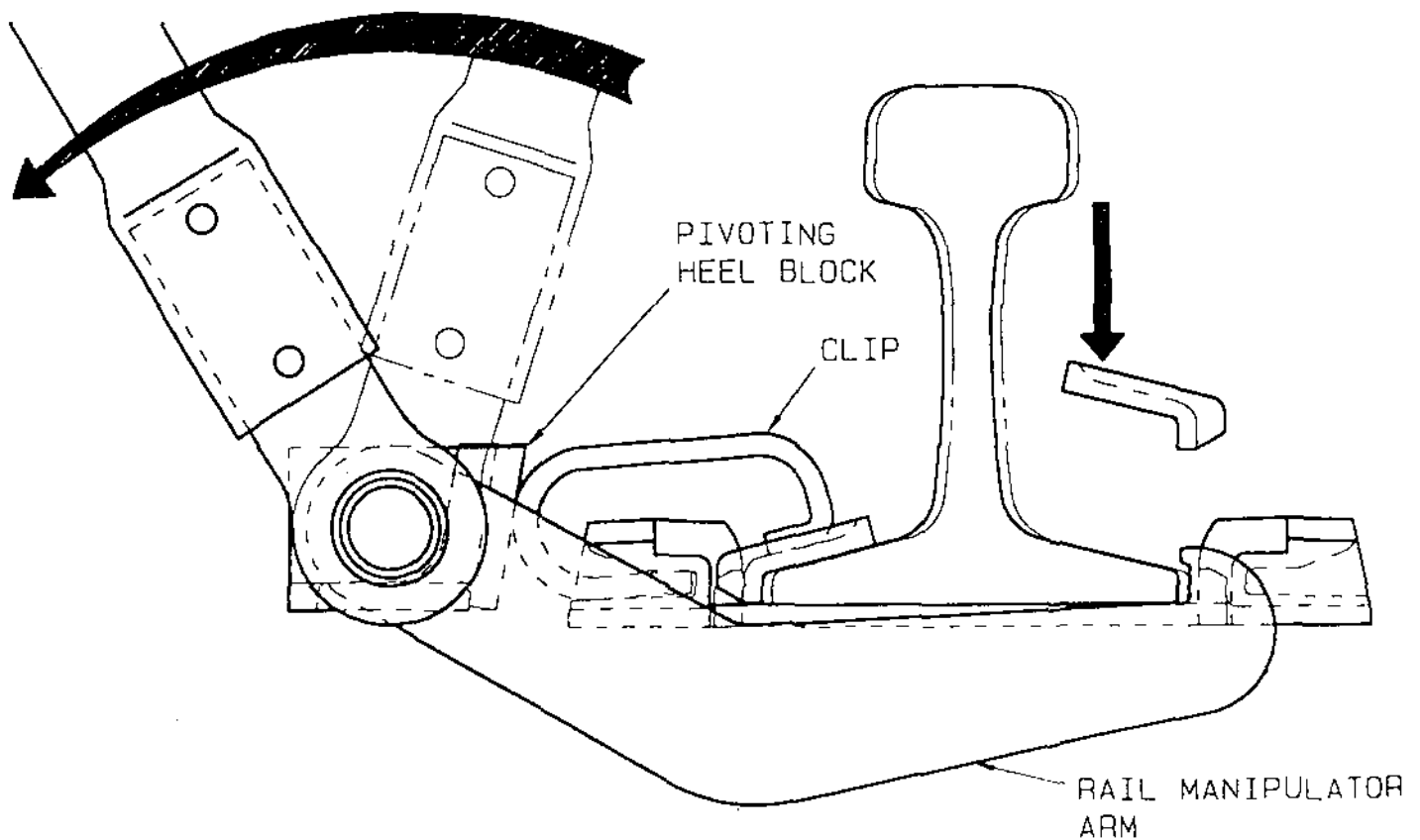
Ideally, the Safelok clip is fully driven when the base of the clip contacts the shoulder casting as shown in the sketch at (A). As a minimum, the ends of the clip prongs must be driven at least 2 mm (0.08") past the face of the cast shoulder. This ensures that the prongs will lock in place on the rail side of the shoulder casting. The spacing can be readily checked with a 2 mm thick piece of material.

INSTRUCTIONS for **MANUAL INSTALLATION** of SAFELOK SPRING CLIPS

STEP 1 -- Center rail in rail seat using a P/N 36220 Rail Manipulator (details in Section 6) and place both insulators.



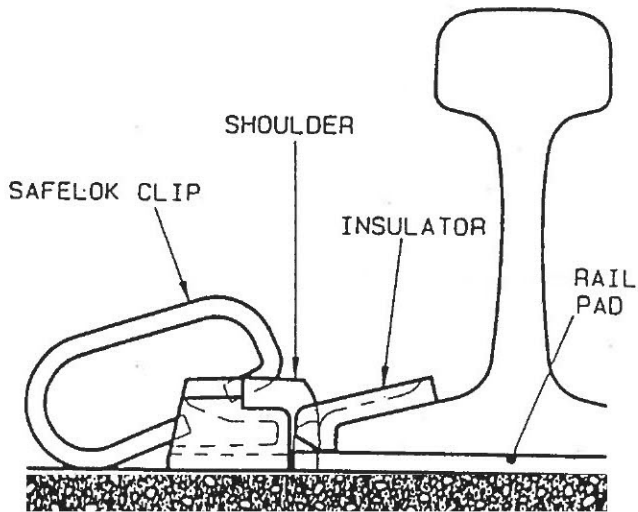
- 1.) WHEN RAIL IS CENTERED IN RAIL SEAT PLACE INSULATORS INTO POSITION BEFORE DRIVING CLIPS.



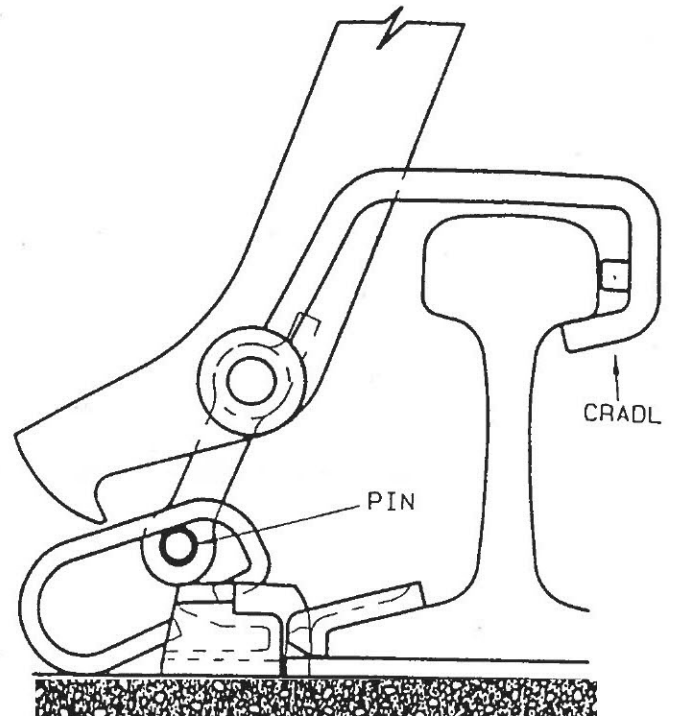
- 2.) FOR LARGE RAIL MISALIGNMENT PLACE INSULATORS AND DRIVE CLIP INTO SIDE WITH GAP; THEN USE MANIPULATOR TO SLIDE RAIL BEFORE FITTING INSULATOR INTO TIGHT SIDE.

INSTRUCTIONS for **MANUAL INSTALLATION** of SAFELOK SPRING CLIPS

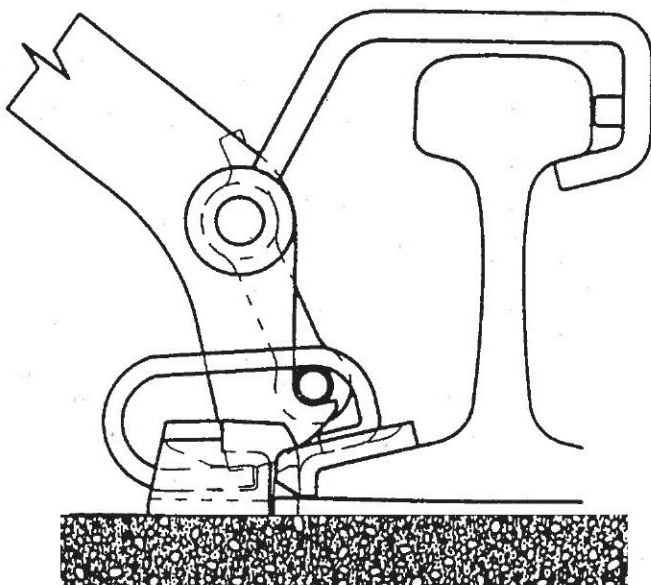
STEP 2 -- Place and pull on both Safelok Spring Clips using a P/N 36749 Pull-On Tool (details in Section 6).



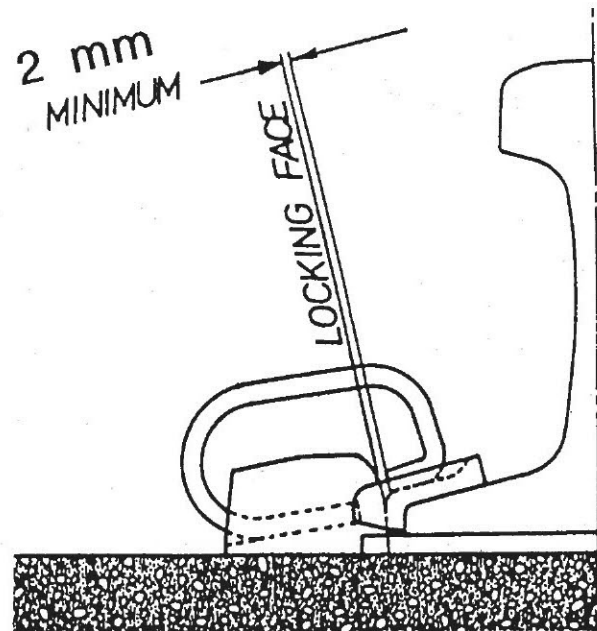
1.) PLACE CLIP BY HAND INTO DRIVING POSITION.



2.) PLACE PULL ON TOOL CRADLE OVER RAIL HEAD WITH PIN EXTENDING THROUGH CENTER OF CLIP.



3.) PLACE HANDS BELOW COLLAR ON HANDLE AND PULL DOWNWARD UNTIL CLIP ENGAGES INSULATOR.



4.) STOP WHEN CLIP TOES PASS FRONT FACE OF SHOULDER, AS SHOWN

